

Region 14 and Region 15 Education Service Center

2017-2018

Head Start/Early Head Start Annual Report to the Public



~1~

Region 14 Education Service Center: Head Start/Early Head Start



~ Giving Children a Head Start on Life ~

Introduction

This report has been prepared in order to comply with the Head Start Reauthorization Act of 2007. The Act states that:

“Each Head Start agency shall make available to the public a report published at least once in each fiscal year that discloses the following information from the recently concluded fiscal year, except that reporting such information shall not reveal personally identifiable information about an individual child or parent:

- (A) The total amount of public and private funds received and the amount from each source.....**4-6**
- (B) An explanation of budgetary expenditures and proposed budget for the fiscal year.....**4-6**
- (C) The total number of children and families served, the average monthly enrollment (as a percentage of funded enrollment), and the percentage of eligible children served.....**7**
- (D) The results of the most recent review by the Secretary and the financial audit.....**13**
- (E) The percentage of enrolled children that received medical and dental exams.....**14**
- (F) Information about parent involvement activities.....**15**
- (G) The agency’s efforts to prepare children for kindergarten.....**17-25**
- H) Any other information required by the Secretary.....**26**



Region 14 Education Service Center (ESC) – Grantee

&

Region 15 Education Service Center (ESC) – Delegate

Region 14 ESC manages three (3) grants: Head Start WEST; Head Start EAST including Region 15 ESC as a Delegate; and Early Head Start Expansion

WEST - 276 HS 48 EHS	EAST / ESC 15 -384 HS 40 EHS	EHS EXPANSION- 72
Albany	Cisco	Colorado City x 2
Anson	Clyde	Comanche x 4
Breckenridge x 2	Comanche x 2	Sweetwater x 3
Colorado x 2	De Leon	
Hamlin	Eastland	
Haskell	Ranger	
Merkel	Ballinger	
Stamford	Brady x 2	

~3~

Region 14 Education Service Center: Head Start/Early Head Start

Sweetwater: Head Start x 5 & Early Head Start x 6	Brownwood: Head Start x 7 & Early Head Start x 5	
	Coleman x 2 Winters	

(A) The total amount of public and private funds received and the amount from each source.

(B) An explanation of budgetary expenditures and proposed budget for the fiscal year.

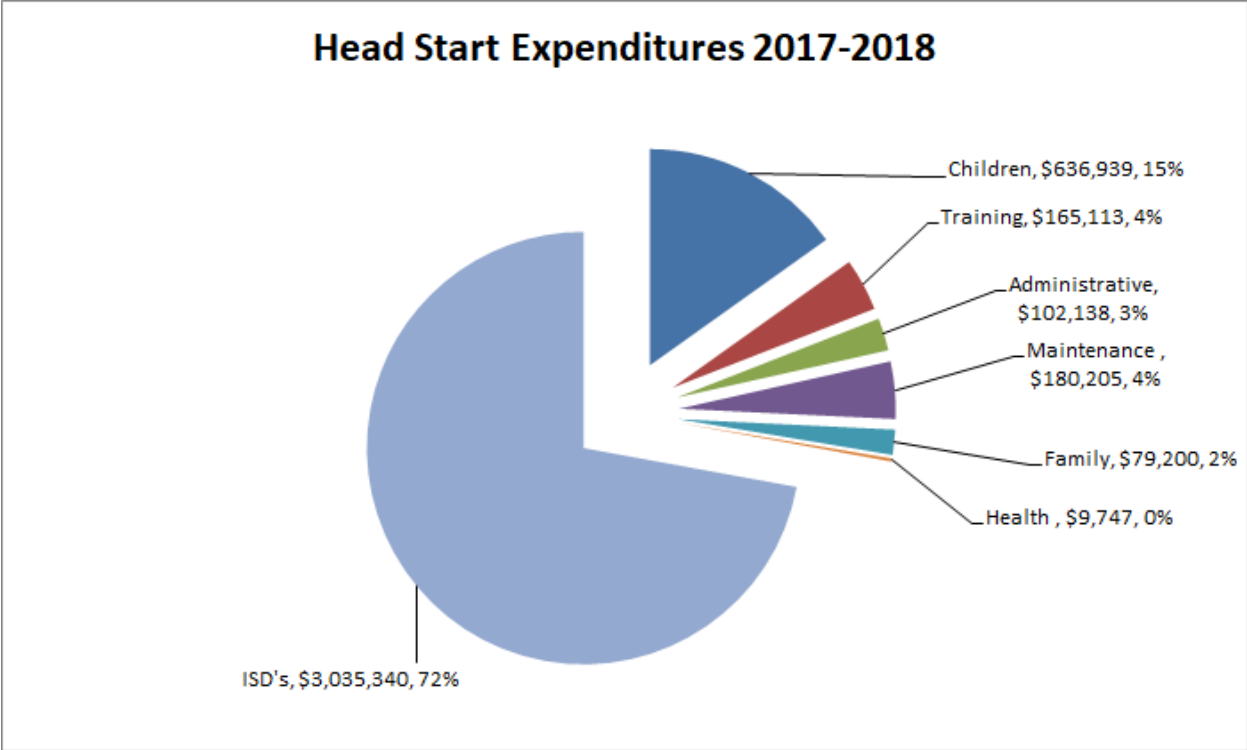
Region 14 Education Service Center Head Start does not possess tax levying or bonding authority and relies on federal grant funding.

The required annual financial audit was performed and completed by Eide Bailly LLP.

Head Start

\$4,255,382 was received for the 2017-2018 Head Start Program. The following diagram represents how the dollars were spent.

Schools that receive Head Start Funds: Albany, Anson, Breckenridge, Cisco, Clyde, Colorado City, Comanche, De Leon, Eastland, Hamlin, Haskell, Merkel, Ranger, Rotan, Stamford, Sweetwater, Ballinger, Brady, Brownwood, Coleman, Winters

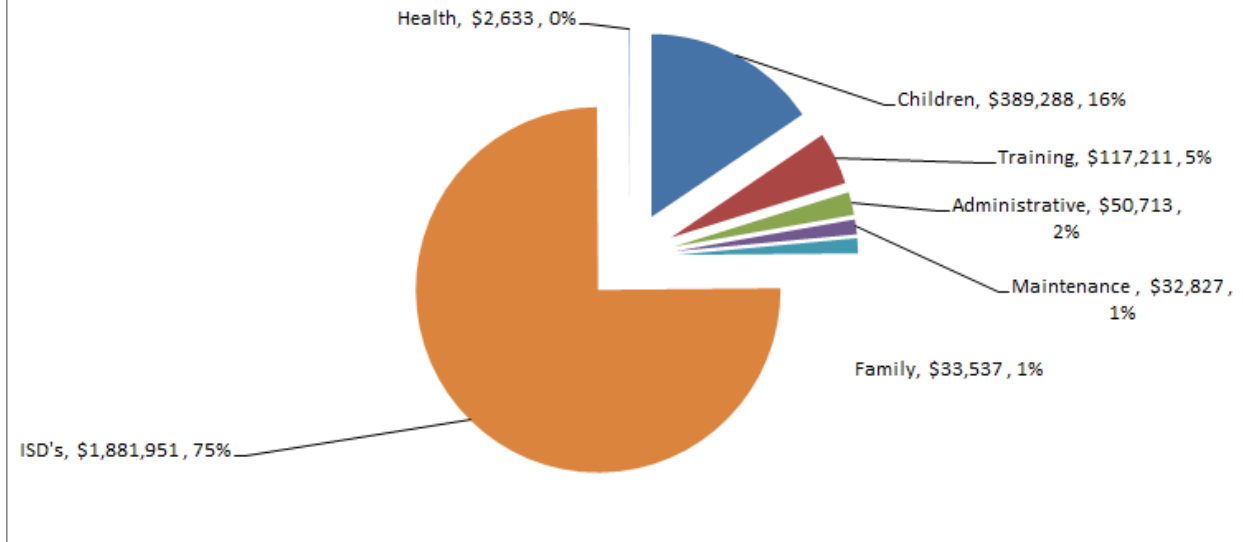


Early Head Start Expansion Grant

\$2,540,925 was received for the 2017-2018 Early Head Start Program. The following diagram represents how those dollars were spent.

Schools that receive Early Head Start Funds: Colorado City, Comanche, Sweetwater, Brownwood

Early Head Start Expenditures for 2017-2018



Non-Federal Share ~ Head Start/Early Head Start In-Kind

For every 80 cents of Head Start/Early Head Start funds received 20 cents must be matched. The federal government also limits administrative cost to be no more than 15% of the total funds received. For 2017-2018, \$1,679,210 was required for matching with a maximum of \$1,259,408 allowable administrative costs. The school districts reported more matching than was required and administrative costs of 10.94%. The following chart demonstrates the amount of matching and administrative costs reported.

2017-2018 IN-KIND/ADMINISTRATIVE COST REPORT		
TOTAL EHS/HS FUNDING	\$	6,716,842.00
IN-KIND REQUIRED	\$	1,679,211.00
ADMINISTRATIVE COST ALLOWED	\$	1,259,408
Categories	Total In-Kind	Total Administrative Cost
ISD Salaries	\$ 1,341,617	\$ 341,726
Contracted Services	\$ 115,984	\$ 115,984
Utilities	\$ 193,609	\$ 9,581
Supplies	\$ 99,526	\$ 95,452
Rental of Classroom Space	\$ 628,372	\$ 31,419
TOTAL PROVIDED BY PARTICIPATING ISD'S	\$ 2,379,108	\$ 594,161
ESC PORTION		
Indirect Cost		\$ 89,929
Administrative Costs		\$ 50,713
TOTALS	\$ 2,379,108	\$ 734,803



Child Demographics



(C) The total number of children and families served, the average monthly enrollment (as a percentage of funded enrollment), and the percentage of eligible children served.

Enrollment

Region 14 ESC Head Start/Early Head Start is funded to serve 276 Head Start children and 48 Early Head Start children.

Region 14 ESC Head Start-East is funded to serve 136 Head Start children.

Region 14 ESC Early Head Start Expansion is funded to serve 72 children.

Region 14 ESC Head Start Delegate Region 15 ESC is funded to serve 248 Head Start children and 40 Early Head Start children.

Head Start partners with the Independent School Districts – any additional children are funded through the school district.

Site	2017-2018 Funded Enrollment	2017-2018 Total Served	2017-2018 # of Classes	2017-2018 Avg. Monthly Enrollment
West				
Albany	17	16	1	100%

Anson	18	19	1	100%
Breckenridge	38	41	2	100%
Site	2017-2018 Funded Enrollment	2017-2018 Total Served	2017-2018 # of Classes	2017-2018 Avg. Monthly Enrollment
Colorado City	36	41	2	100%
Hamlin	19	24	1	100%
Haskell	18	20	1	100%
Merkel	19	24	1	100%
Stamford	18	21	1	100%
Sweetwater HS	93	112	5	100%
Sweetwater EHS	48	56	6	100%
Total	324	374	21	100%
East				
Cisco	17	25	1	100%
Clyde	17	19	1	100%
Comanche	34	39	2	95%
DeLeon	17	18	1	100%
Eastland	17	22	1	100%
Ranger	17	18	1	100%
Total	136	141	7	99%
Region 15 East Delegate				
Ballinger	17	20	1	100%
Brady	40	44	2	100%
Brownwood HS	134	158	7	100%
Brownwood EHS	40	48	5	100%
Coleman	40	43	2	100%
Winters	17	20	1	100%
Total	288	333	16	100%
EHS Expansion				
Colorado City	16	17	2	100%
Comanche	32	36	4	100%
Sweetwater	24	25	3	100%
Total	72	78	9	100%

*Average Monthly Enrollment – not listed as this was the first year for these classes/PIR Report

	Total Number by Ethnicity	Hispanic or Latino Origin	Non-Hispanic/ Non-Latino
Early Head Start	56	29	27
Head Start	317	173	144
Head Start-East	139	50	89
Early Head Start-East (Delegate)	48	21	27
Head Start-East (Delegate)	283	112	171
Early Head Start-Expansion	78	52	26

Source: PROMIS/PIR

	Black	White	Native American	Pacific Islander	Asian	Biracial/ Multi-racial	Other
Early Head Start	9	45	0	0	0	1	1
Head Start	36	260	5	0	1	7	8
Head Start-East	0	136	2	0	0	1	0
Early Head Start-East (Delegate)	7	41	0	0	0	0	0
Head Start-East (Delegate)	13	263	0	0	1	6	0
Early Head Start-Expansion	13	57	1	1	0	1	5

Source: PROMIS/PIR

Languages Spoken by Children

	Total	English	Spanish	Asian	Other
Early Head Start	56	55	1	0	0
Head Start	317	304	13	0	0
Head Start-East	139	127	12	0	0
Early Head Start-East (Delegate)	48	48	0	0	0
Head Start-East (Delegate)	283	276	7	0	0
Early Head Start-Expansion	78	74	3	0	0

Source: PROMIS/PIR

Gender of Students

	<u>Male</u>	<u>Female</u>
Early Head Start	30	32
Head Start	169	163
Head Start-East	77	70
Early Head Start-East (Delegate)	18	30
Head Start-East (Delegate)	84	74
Early Head Start-Expansion	83	50

Source: PROMIS

Head Start Disabilities

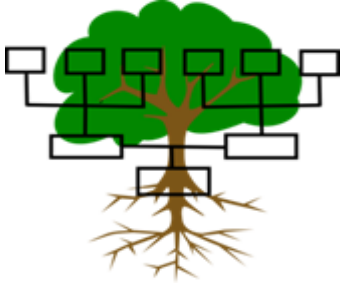
	Total Enrolled	Total with Disabilities	Percentage Served with Disabilities	Cerebral Palsy	NCEC	Autism	Orthopedic Impairment	Speech Language	Visual/ Blindness	Other Health Impaired
Head Start	337	47	14%	0	7	0	0	40	0	0
Head Start-East	139	24	17%	0	2	0	0	21	1	0
Head Start-East (Delegate)	283	34	12%	0	2	0	0	32	0	0

Source: PROMIS/PIR

Early Head Start Disabilities

	Total Enrolled	Total with Disabilities	Percentage Served with Disabilities	Developmental Delay	Atypical Development
Early Head Start	48	8	17%	8	0
Early Head Start-East (Delegate)	48	13	27%	13	0
Early Head Start-Expansion	78	8	10%	8	

Source: PROMIS/PIR



Family Structure

Parental Status

	Number of Families	One Parent	Two Parents
Early Head Start	54	40	14
Head Start	293	186	107
Head Start-East	130	76	54
Early Head Start-East (Delegate)	43	28	15
Head Start-East (Delegate)	271	170	101
Early Head Start-Expansion	74	54	20

Source: PROMIS/PIR

Employment

	Two Parent Households Both Parents Employed	Two Parent Households One Parent Employed	Two Parent Households Both Parents Unemployed	One Parent Household One Parent Employed	One Parent Household Parent Unemployed
Early Head Start	5	6	3	31	9
Head Start	35	52	20	129	56
Head Start-East	15	32	7	50	26
Early Head Start-East (Delegate)	7	7	1	23	5
Head Start-East (Delegate)	46	44	11	131	39
Early Head Start-Expansion	7	12	1	44	10

Source: PROMIS/PIR



2~
ter: Head Start/Early Head Start

Education Level of Parents

	<HS Graduate	HS Graduate/ GED	Some College/ Associates	Bachelors , Degree or Higher	Number in Job Training or School
Early Head Start	13	30	10	1	12
Head Start	47	137	94	15	29
Head Start-East	19	65	41	5	11
Early Head Start-East (Delegate)	4	20	16	3	1
Head Start-East (Delegate)	34	157	73	6	9
Early Head Start-Expansion	12	32	26	4	12

Source: PROMIS/PIR

Public Assistance

	TANF/ Former TANF	SSI	WIC
Early Head Start	0	1	21
Head Start	6	13	60
Head Start-East	3	5	22
Early Head Start-East (Delegate)	2	2	15
Head Start-East (Delegate)	2	16	51
Early Head Start-Expansion	1	4	34

Source: PROMIS/PIR

Family Services during 2017-2018

~13~

Region 14 Education Service Center: Head Start/Early Head Start

Services	Early Head Start West	Head Start West	Head Start-East	Early Head Start-East (Delegate)	Head Start-East (Delegate)	Early Head Start-Expansion
Emergency/Crisis Intervention	3	27	30	31	9	2
Housing Assistance (subsidies, utilities, repairs)	5	25	8	5	29	5
Transportation Assistance	N/A	N/A	N/A	N/A	N/A	N/A
Mental Health Services	1	18	6	41	146	2
English as a Second Language Training	0	3	1	0	7	1
Adult Education (GED, college selection)	13	45	22	3	32	20
Job Training	1	17	11	4	33	5
Substance Abuse Prevention/Treatment	0	0	0	0	36	0
Child Abuse/Neglect Services	1	0	0	1	0	0
Domestic Violence Services	0	0	1	37	5	0
Child Support Assistance	0	2	1	0	0	1
Health Education (including prenatal)	1	23	2	0	52	2
Assistance to Families of Incarcerated Individuals	1	0	01	0	0	0
Parenting Education	51	270	112	40	245	69
Marriage Education Services	0	1	0	0	0	1
Fatherhood	11	106	40	2	102	9
Number of Parent Meetings at HS Sites	9	9	9	9	9	9
Total Number of Families Receiving Services	52	281	129	43	263	71
Number of Homeless Families Served	2	15	4	1	11	3
Percentage of Families that we provided services for	93%	88%	91%	90%	92%	91%

Source: PROMIS/PIR

(D) The results of the most recent review by the Secretary and the financial audit.

All Head Start programs undergo an on-site review to see how well the program is complying with the Federal Head Start Performance Standards and other regulations. Region 14 Education Service Center Head Start/Early Head Start last on-site review was February 3-8, 2016; conducted by the Administration for Children and Families.

Based on the information gathered on the onsite review and desktop review, it was established that the Head Start and Early Head Start Programs were in compliance.

(E) The percentage of enrolled children that received medical and dental exams.

Student Receiving Medical & Dental Services

	Medical	Percentage	Dental	Percentage
Early Head Start	56	100%	56	100%
Head Start-West	311	98%	311	98%
Head Start-East	137	99%	137	99%
Early Head Start-East (Delegate)	48	100%	48	100%
Head Start-East (Delegate)	281	99%	283	100%
Early Head Start-Expansion	78	90%	78	90%

Source: PROMIS/PIR

Children having Primary Health Coverage

	CHIP and/or Medicaid	Private	Other	None
Early Head Start	53	3	0	0
Head Start-West	288	22	0	7
Head Start-East	123	9	1	6
Early Head Start-East (Delegate)	48	0	0	0
Head Start-East (Delegate)	251	27	2	3
Early Head Start-Expansion	75	2	0	1

Source: PROMIS/PIR

(F) Information about parent involvement activities.



Volunteer Activities: In the Classroom, Mealtimes, Field Trips, Enrollment & Recruiting, Socials & Outings, Start a Parent Exercise or Walk Club

Volunteer Information

	Total Number of Volunteers	Volunteers who are Former/ Current Parents
Early Head Start	29	25
Head Start	366	206
Head Start-East	167	91
Early Head Start-East (Delegate)	53	38
Head Start-East (Delegate)	271	225
Early Head Start-Expansion	19	14

Source: PROMIS/PIR

Parent Engagement Opportunities

~16~

Region 14 Education Service Center: Head Start/Early Head Start

Activity	Details
Opportunity to develop partnership agreement and family goals	Offered to all enrolled families
Health Advisory Committee	Parent representatives attend meetings twice a year that include community agencies
Policy Council Meetings	Parent representatives from each site attend monthly Policy Council meetings
Self-Assessment	Parents participate in program Self-Assessment activities, including completing site health and safety checklist and parent satisfaction survey
Volunteer Opportunities	Parents are invited and trained to be volunteers in the program service areas
Male Involvement	Fatherhood – Sites offer male involvement activities
Language Facilitator	Language Facilitator positions are available to parents, giving them an opportunity to work in the classroom up to 16 hours per month. These parents will be trained by ESC Head Start Staff
Monthly Parent Meetings/Parent Trainings	Parents are offered training opportunities based on parent request and federal performance standards topics, such as: <ul style="list-style-type: none"> ● Pedestrian Safety ● Emergency Preparedness/Fire Safety ● Nutrition – food prep, meal planning ● Mental Health: child and family ● Parenting Skills ● Child Development ● Child Abuse/Neglect ● Behavior Management ● Financial Literacy ● Parent Building Blocks ● Ready Rosie
Home Visit/Conferences	Staff conducts two educational home visits and two parent/teacher conferences each program year to discuss child’s developmental progress and set new learning goals.
Seasonal/Yearly Activities	*Fall Festivals *F.A.M.I.L.Y. Day (Families Achieving Milestones In Learning Years) *Summer Festivals: Peach and Melon Festival *Parent University

(G) The agency's efforts to prepare children for kindergarten.

Head Start Assessment Tool and Curriculum

Head Start School Readiness Plan for Student Success

Region 14 Head Start (HS) and Early Head Start (EHS) implemented a high quality, developmentally appropriate, comprehensive program designed to help children achieve early learning and development outcomes to promote their school readiness. The curriculum used in EHS was Frog Street Curriculum for Infants and Frog Street Curriculum for Toddlers with Creative Curriculum® for Infants, Toddlers and Twos as an additional resource. In HS, each school district partner chose the state approved curriculum it desired with most using the Frog Street Pre-K (FSPK) curriculum. All ages utilized Conscious Discipline® strategies to support social and emotional intelligence and, in turn, cognitive performance.



The EHS curriculum helped teachers be intentional about experiences offered while having the flexibility to respond to the changing interests and abilities of the children. This curriculum was implemented because it supports instruction that is designed for infants and toddlers, meets individual needs and is culturally and socially appropriate. Teachers are using the curriculum with fidelity. The Frog Street Curriculum provided a smooth transition to HS where most programs use FSPK making the curriculum continuous for children ages birth to 5. Curriculum for infants and toddlers is essentially about building responsive relationships, and the EHS curriculum provides a concrete framework to accomplish this. It equipped the teacher with information about child development in order to guide planning and individualizing to help each child succeed. It offered teachers a broad range of caring and teaching strategies making learning meaningful and engaging for each child. Texas Early Learning Guidelines have been aligned with Texas Pre-K Guidelines and with the Head Start Early Learning Outcomes Framework (HSELOF) ensuring developmental appropriateness and a sequential plan for individualized instruction; this assures a seamless support of student progress as they transition to Head Start. 112 more children were served in EHS to provide an even larger impact on the school readiness of children in four communities.

All curricula that is used by the Region 14 Head Start/Early Head Start program has been aligned with the HSELOF. Frog Street Pre-K (FSPK) is a high quality, research-based curriculum organized into ten skill domains that support integration of curriculum which builds connections between and among all disciplines. FSPK features distinct home/school/community connections linked to thematic units and the scope and sequence. Family Connections resources include newsletters, extension activities for the home, parent participation ideas and more.

Teaching Strategies GOLD™: Objectives for Development & Learning: Birth Through Third Grade is the child assessment system used by Region 14 ESC Head Start and Early Head Start. The system is organized into 10 areas of development and learning with 38 objectives.

Parent insights from home visits/conferences, teacher observation notes, teacher checklists and child work samples are reviewed and applied to checkpoints on the GOLD™ online system that assesses HS students three times per school year and EHS East 4 times per year. Reports were generated on program progress, class progress, and individual child progress measuring skills that support School Readiness Goals. Parents were provided with Teaching Strategies GOLD Family Conference forms which facilitated explanations of progress and promoted parental input for modified instruction for their child. Teachers used the assessment outcomes to individualize instruction for all students, as well as groups of students including English language learners and children with disabilities. The program used the assessment results and analyses of patterns of progress to plan trainings and technical assistance for teaching staff and parents. In addition, results were used in monitoring lesson plans, providing individualized coaching for teachers and in purchasing resources needed for instruction and learning.

Teachers were monitored regularly by ESC 14 education and disability coordinators. In EHS, coordinators used the Infant/Toddler Environment Rating Scale (ITERS) which uses a broad definition of environment including organization of space, interaction, activities, schedule and provisions for parents and staff. Monitoring included file reviews, classroom observations, and training resources with feedback consisting of goal setting to improve teacher-child interactions. HS classrooms were evaluated by education coordinators using a program designed environmental checklist to monitor the environment for developmentally appropriate practice. The checklist contains early childhood best practice elements, Conscious Discipline resources, health and safety practices and teacher child interactions. CLASS®reliable coordinators used the Classroom Assessment Scoring System (CLASS)®to assess teacher-child interactions, to provide teacher feedback for growth and improvement. A contracted CLASS®certified consultant conducted observations to provide data for program improvement. Teachers received written reports with ideas for strengthening Emotional Support, Classroom Organization and Instructional Support to improve quality teaching for child growth. Monitoring results were used to plan, track and support professional growth.



Region 14 ESC Early Head Start and Head Start

School Readiness Goals

Approaches to Learning:

Children will express themselves creatively through arts, music, dance, and movement.

Children will demonstrate positive approaches to learning through persistence, problem solving, and curiosity.



Social and Emotional Development:

Children will learn to regulate their own emotions and behavior.

Children will learn how to establish relationships, participate cooperatively and constructively in group situations.

Language and Literacy:

Children will demonstrate phonological awareness, knowledge of the alphabet, knowledge of print and its uses, and demonstrate emergent writing skills.

Children will respond to books and other texts.

Children will listen to and understand increasingly complex language, use language to express thoughts and needs in order to communicate and converse.

Second language learners will demonstrate progress in listening to, understanding and speaking English.

Cognition:

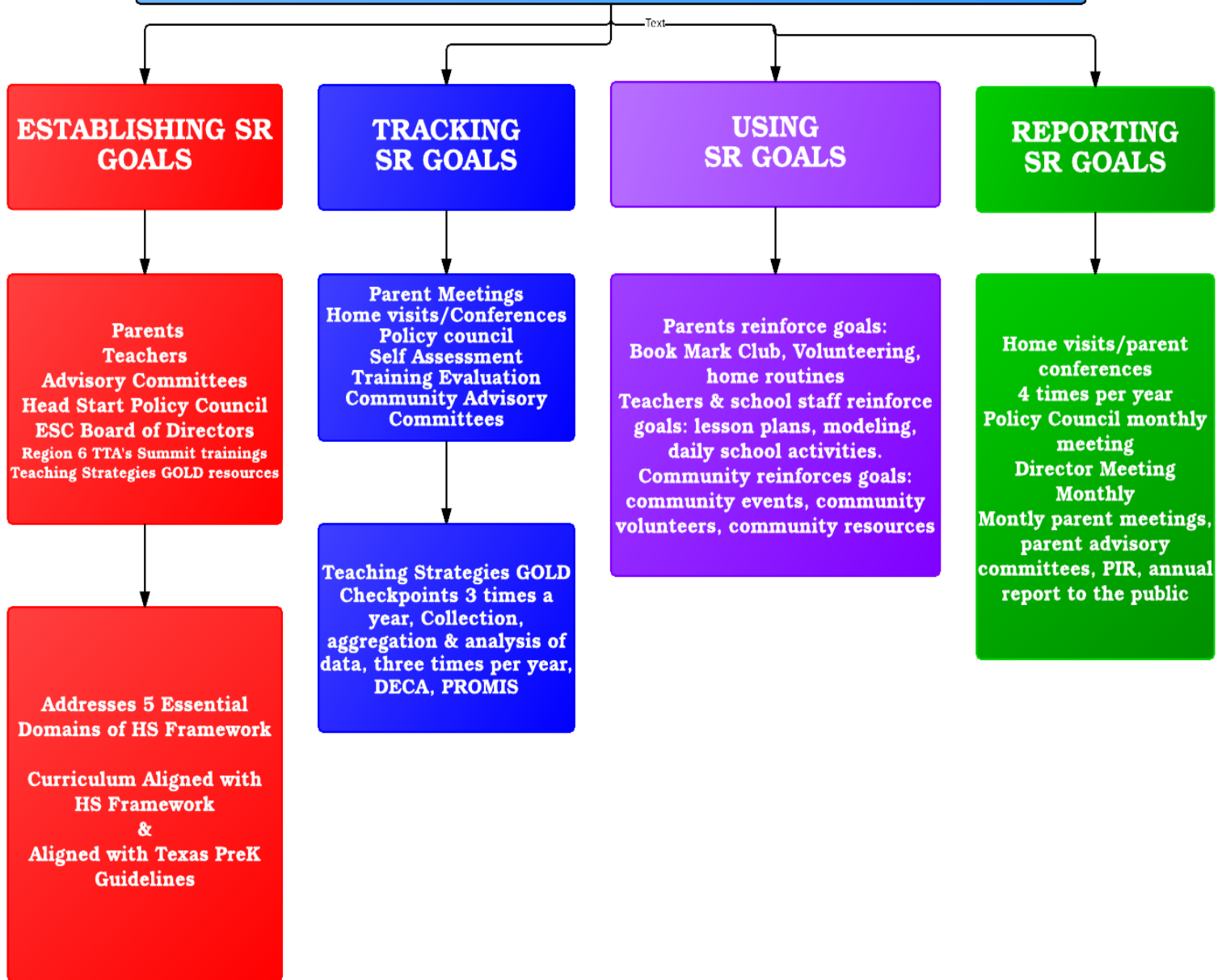
Children will develop mathematical knowledge using number concepts and operations, will explore spatial relationships and shapes, and will compare and measure.

Perceptual, Motor, and Physical Development:

Children will demonstrate increasing gross motor control.

Children will demonstrate healthy habits.

School Readiness & Family Engagement Flow Chart



STEPS for Children Transitioning from Head Start to Kindergarten

For children transitioning to Kindergarten, parents were encouraged to participate in all school activities to help establish a routine of attending parent conferences and meetings. The families received a Get Ready for Kindergarten Activity Calendar at the beginning of the year to help promote learning at home. Lastly, students will learned school routines and expectations throughout the year.

Final Parent/Teacher Conference

1. Look at the *Parent Transition Interview* form and consider what steps you will need to do for each child and what information to share.
2. Schedule the final parent/teacher conference.
3. Items needed at the final parent teacher conference:
 - ✓ The *Second Required Parent/Teacher at School Conference* form
 - ✓ *Parent Transition Interview* form
 - ✓ From GOLD, the *Development and Learning Report*
 - ✓ The *What About Kindergarten* flyer
4. At the conference: Complete the forms and discuss the *Development and Learning Report* and the *What About Kindergarten* flyer. Using the flyer as a starting point, let the family know about specific items that are expected by the school and teachers for Kindergarten. Give the flyer to the parent.
5. Following the conference: Make 1 copy of the completed *Second Required Parent/Teacher at School Conference* form; 1 copy of the completed *Parent Transition Interview*, and 2 copies of the *Development and Learning Report*. Place the signed originals in the child's file.
6. Put a copy of the *Parent Transition Interview* and the *Development and Learning Report* in the transition envelope that will be provided by Region 14. Give the envelope to the parent with instructions to hand it to the Kindergarten teacher.
7. Give a copy of the *Second Required Parent/Teacher at School Conference* form and the *Development and Learning Report* to the parent for their information.

8. OPTIONAL: Your school may want you to make another copy of the *Development and Learning Report* to place in the child's school permanent folder. Some may encourage visiting kindergarten classes as well.

What about Kindergarten (flyer provided to parents)

As the first day of Kindergarten approaches, you will want to do extra things to make the school seem a friendlier place for both you and your child. You will want to learn:

- ❖ The principal's name;
- ❖ The kindergarten teacher's name;
- ❖ When to register for kindergarten and what forms need to be filled out;
- ❖ What immunizations are required before the first day of school;
- ❖ A description of the kindergarten program;
- ❖ The kindergarten yearly calendar and daily schedule;
- ❖ Transportation procedures;
- ❖ Food service arrangements;
- ❖ How you can become involved in your child's education and in the school.

Visit the school with your child so your child can become familiar with it, and it won't seem scary. Walk up and down the hallways to learn where things are.

Talk with your child about school. During your visit, make positive comments about the school--your attitude will rub off! Tell the child about what they do when classes begin. Talk about the teachers, and how they will help your child learn new things. Encourage your child to look at the teacher as a wise friend toward whom children should be courteous. Take your child by the classroom to visit the teacher. You can do this during the preparation days right before school begins. Explain to your child how important it is to go to school every day.

If possible, **consider volunteering to help out in the school.** The staff will appreciate having an extra adult to help do everything from passing out paper and pencils in the classroom to supervising on the playground or in the lunchroom. Volunteering is a good way to learn more about the school and to meet its staff and other parents.

When the **first day of kindergarten arrives**, go to school with your child (but don't stay long). And, be patient. Many young children are overwhelmed at first, because they are facing a new situation. They may not immediately like school. Your child may cry or cling to you when you say goodbye each morning, but with support from you and the teacher, this can rapidly change.

As your child proceeds through school, you will need to continue your encouragement and involvement. (Remember to always discuss concerns you have about what is going on at school with the teacher.) Let your children know how proud you are of them. Let them know you

believe that they will succeed. Always be enthusiastic and ask them to share what happened at school each day.

Good Health and Physical Well-Being

My child:

- ❖ Eats a balanced diet
- ❖ Receives regular medical and dental care and has had all the necessary immunizations.
- ❖ Gets plenty of rest
- ❖ Runs, jumps, plays outdoors, and does other activities that help develop large muscles and provide exercise.
- ❖ Works puzzles, scribbles, colors, paints, and does other activities that help develop small muscles.

Social and Emotional Preparation

My child:

- ❖ Is learning to be confident enough to explore and try new things
- ❖ Is learning to work well alone and to do many tasks for himself
- ❖ Has opportunities to be with other children and is learning to cooperate with them.
- ❖ Is curious and motivated to learn
- ❖ Is learning to finish tasks
- ❖ Is learning to use self-control
- ❖ Can follow simple instructions
- ❖ Helps with family chores

Language and General Knowledge

My child:

- ❖ Has many opportunities to play as well as get firsthand experiences--using the 5 senses.
- ❖ Is read to every day and has access to books.
- ❖ Is learning to write his/her name, to count, and to recognize some colors, shapes, number and letters.
- ❖ Has his/her television viewing monitored by an adult
- ❖ Encouraged to ask questions and to solve problems, to sort and classify things and to notice similarities and differences (for example looking for all the red cars as you are driving

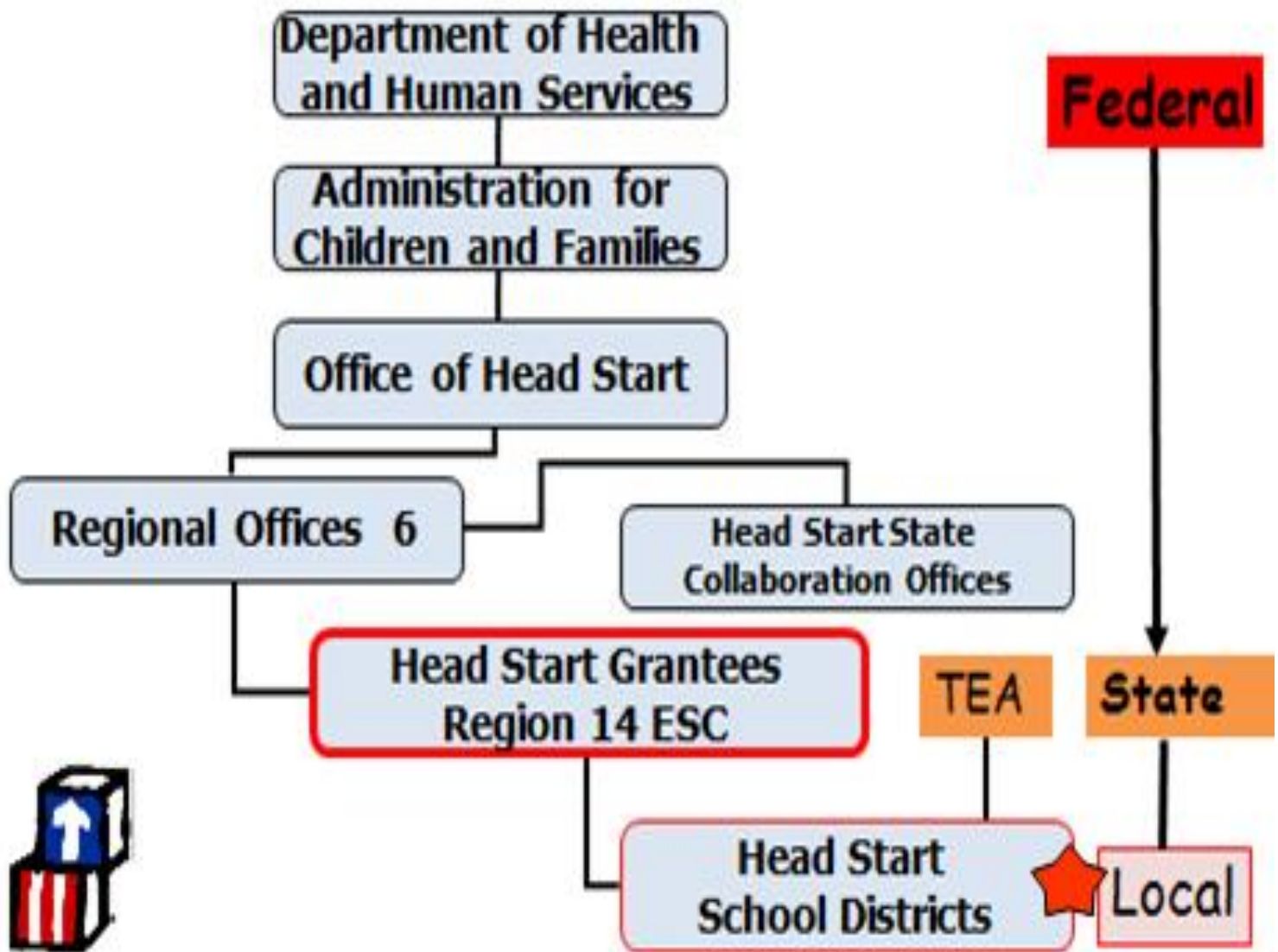
Region



Lead Start

H) Any other information required by the Secretary

Head Start Organization Chart



Region 14 Education Service Center

Head Start & Early Head Start

Proudly

**“Giving Children a Head Start on
Life”**

