



**Summer
Blast**
June 23-24

Hosted by Region 14 Education Service Center

Registration Instructions for Summer Blast 2016



Preconference Offerings

Four Ways You Can Support Early Communication of ALL AGES – Sherry Sancibrian
June 20, 2016 Session # 102047 Taylor Room Registration \$10

Conscious Discipline – Jill Molli & DJ Batiste
June 21-22, 2016 Session # 102040 Location TBD Registration \$10

Summer Blast Day 1 (Two Options)

June 23, 2016

[Re] imagining Special Education – Jayme Alexander, Lead4ward
Session # 101709 Taylor Room Registration fee \$10

Teaching Academics in the Low Incidence Classroom – Cindy Lovelace, STAAR–Alt Helper
Session # 102206 Nolan Room Registration fee \$10

Summer Blast Day 2 (Full Day and Half Day Sessions)

June 24, 2016

Session # 101712 ESC Main Location Registration fee \$10

Participants will register for the full day. Once registration is complete, an email confirming registration will be sent to participant. Participants will choose their breakout sessions by connecting to a link in the confirmation email. Participants will then receive an additional email listing the individual sessions that they will be attending.

Registration available at www.esc14.net

TSHA Continuing Education credits will be available,
pending approval.





Tamara McGaughey
Special Education Director
tmcgaughey@esc14.net
325-675-8616



Brenda Lee
Vision Impairment
blee@esc14.net
325-675-8632



Linda Moran
Assistive Technology & Low
Incidence Disabilities
lmoran@esc14.net
325-675-8635



Lisa White
Speech & Autism
lwhite@esc14.net
325-675-8636



Lisette Spraggins
Behavior
lspraggins@esc14.net
325-675-8676



Trudy Little
Preschool
tlittle@esc14.net
325-675-8614

Special Education Department



Pam Loper
State Assessment and Access
to General Curriculum
ploper@esc14.net
325-675-8633



Patti Tessen
Evaluation & Transition
ptessen@esc14.net
325-675-7019



Denise Brown
Orientation & Mobility
dbrown@esc14.net
325-675-8671

Conference Schedule

Thursday, June 23, 2016
Choose from Full Day Sessions

8:30–3:30 Session# 101709	[Re] imagining Special Education by Jayme Alexander, Lead4ward
------------------------------	---

Lunch (on your own; see page 14 for locations)

8:30–3:30 Session# 102206	Teaching Academics in the Low Incidence Classroom by Cindy Lovelace, STAAR–Alt Helper
------------------------------	--

Friday, June 24, 2016
Session #101712
Choose from Full and Half Day Sessions

8:30–11:30	AM Session
------------	------------

11:30–1:00	Lunch (on your own; see page 14 for locations)
------------	--

1:00–3:30	PM Session
-----------	------------

Summer Blast Conference 2016

Full Day Workshop for General and Special Educators

[Re] imagining Special Education

Presented by Jayme Alexander

Session #101709 Taylor Room

Thursday, June 23, 2016



Jayme's vocation has been serving special populations as a teacher and consultant for over 15 years. She has had the pleasure of learning from students with both high- and low-incidence disabilities in settings ranging from resource classrooms and inclusion to consultation and outreach. Jayme's experience includes working at education organizations as well as in school districts across the nation, including the Nebraska Center for the Education of Children who are Blind or Visually Impaired, Austin Independent School District, and many others.

Session Description:

Assessment and accountability have changed drastically in recent years for students with disabilities, creating a sense of urgency for educators. Current state data about performance of students with disabilities is complex, confusing, and cause for concern. These changes require [re]visioning our most fundamental decision-making and delivery structures. In this session, we will provide an overview of the following: leveraging the construct of the TEKS student expectations (process, readiness, and supporting); badgering student competencies longitudinally to inform PLAAFP; designing structure to help educators identify and implement effective teaching strategies; and [re]conceptualizing specially designed instruction around the cognitive demands of the curriculum and assessment.

Summer Blast Conference 2016

Full Day Workshop for Low Incidence Disabilities

Teaching Academics in the Low Incidence Classroom

Presented by Cindy Lovelace
Session #102206 Nolan Room
Thursday, June 23, 2016



Cindy Lovelace has worked with children and adults with significant cognitive disabilities for 30 years. She dedicated the last 17 years teaching students in the Life Skills classroom. With all of her experience, she created a variety of lessons that would help her students be prepared for the STAAR Alternate 2 assessment. She shared her lessons with teachers in her district. The news spread and other teachers out of her district were requesting to purchase her CDs for their classroom. Cindy is now retired and has an online business named, "The STAAR Alt Helper".

Session Description:

Join us for a day of planning and preparation for your 2016-17 Life Skills classroom. In the morning, we will listen to Cindy Lovelace, also known as the "STAAR-ALT Helper", present her methods and strategies of how she taught academics in her life skills classroom.

***Cindy will offer participants a voucher for 50% off of any CD in her STAAR-Helper store.*

In the afternoon, participants will have time to collaborate/brainstorm and create activities/lessons that align with the state standards through essence statements. Participants will be ready to implement plans for the start of the 16-17 school year.



Summer Blast Conference 2016

Full Day Workshop for Evaluation Personnel

Legal Issues for Evaluation Personnel

Presented by Holly Wardell

Session #101709 Jones Room

Friday, June 24, 2016



Holly Boyd Wardell is a licensed attorney and shareholder in the Austin office of Eichelbaum, Wardell, Hansen, Powell & Mehl law firm. Her work on position statements, motions, and briefs has resulted in numerous victories for school districts at every level conceivable. Additionally, she regularly attends ARD and Section 504 Committee meetings, represents clients at due process hearings, as well as finds time to write articles for state and firm publications. She is a frequent guest speaker for educators on topics from school law and special education to student discipline, and many others.

Session Description:

Special Education evaluation personnel are responsible for not only complying with legal procedures surrounding the evaluation process, but also documenting the legal requirements in the ARD process. An attorney's perspective regarding best practice in these areas can be very beneficial. Holly Wardell will cover a variety of topics including: Child Find vs. RtI, the REED process, PLAAFP/Annual goals, specific disability categories, IEEs, and nursing services. She will also review the "hot topics" in which she has seen an increase in TEA complaints and due process hearings.

Summer Blast Conference 2016

Spotlighted Half Day Sessions



Laura Riffel, Ph.D.

Dr. Laura Riffel, Behavior Doctor, provides training and educational materials to help professionals, educators, and family members communicate more effectively with people of differing ability levels. With more than 30 years of experience, Dr. Riffel has trained thousands of teachers, parents, counselors, psychologists, administrators, and bus drivers on how to make data based decisions as a way to change behavior. Her trainings are filled with humor and make data collection easy to understand and use in any setting.

Creative Interventions for Students with Challenging Behaviors (see page 12–13 for full description)

June 24, 2016 8:30-11:30 or 1:00-3:30 Nolan Room



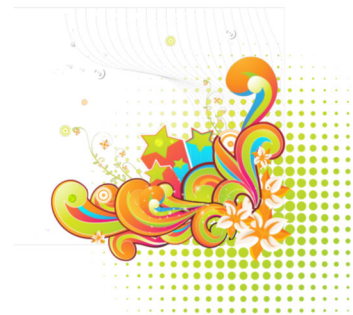
Sasha Long

Sasha Long, M.A., BCBA, is the founder and president of The Autism Helper, Inc. She is a board certified behavior analyst and certified special education teacher with eight years of experience in a premier autism program. Sasha manages and writes *The Autism Helper Blog*, as a way to share easy to use and ready to implement strategies and ideas. In addition to being a national presenter, Sasha is currently an adjunct professor in the school of Applied Behavior Analysis at The Chicago School of Professional Psychology.

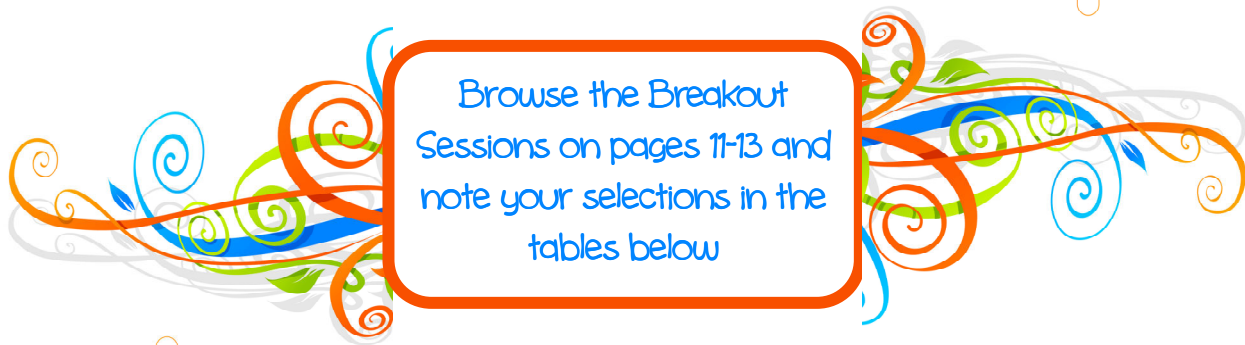
Literacy Instruction for Students with Autism (see page 12 for full description)

June 24, 2016 1:00-3:30 Eastland Room

See pages 11–13 for additional exciting session descriptions.



Conference Planning Form



Thursday, June 23, 2016 (Choose one)				
Check One	Time	Session Number	Title	Location
	8:30-3:30	101709	[Re] imagining Special Education– <i>Jayme Alexander</i>	Taylor Room (ESC Main)
	8:30-3:30	102206	Teaching Academics in the Low Incidence Classroom– <i>Cindy Lovelace</i>	Nolan Room (ESC Main)

Friday, June 24, 2016 Session #101712		
Time	Title	Location
8:30-11:30 Half Day		
1:00-3:30 Half Day		
-OR-		
8:30-3:30 Full Day Only	Legal Issues for Evaluation Personnel– <i>Holly Wardell</i>	Jones Room

Workshops are at one location.

Region 14 ESC Main Campus
1850 Highway 351



Conference At-a-Glance

Thursday, June 23, 2016

8:30-3:30	ESC Main Campus	Taylor	[Re] imagining Special Education- <i>Jayne Alexander</i> (FULL DAY)	•																				
		Nolan	Teaching Academics in the Low Incidence Classroom- <i>Cindy Lovelace</i> (FULL DAY)																					

Friday, June 24, 2016

8:30-11:30		Nolan	Creative Interventions for Students with Challenging Behaviors- <i>Laura Riffel</i>	•																						
		Taylor	Engaging Resources for Inclusive Classrooms- <i>Pam Loper</i>	•																						
	ESC Main Campus	Eastland	Differentiating in PPCD– <i>Trudy Little</i>	•																						
		Shackelford	Connecting Learning Through Engaging Centers- <i>Jeff Samuelson & Tosh McGaughy</i>	•																						
			Jones	Legal Issues for Evaluation Personnel- <i>Holly Wardell</i> (FULL DAY)	•																					

LUNCH 11:30-1:00

1:00-3:30		Nolan	Creative Interventions for Students with Challenging Behaviors- <i>Laura Riffel</i>	•																						
		Taylor	Pick-A-Path Professional Development- <i>Various Presenters</i>	•																						
	ESC Main Campus	Eastland	Literacy Instruction for Students with Autism– <i>Sasha Long</i>	•																						
		Shackelford	Connecting Learning Through Engaging Centers- <i>Jeff Samuelson & Tosh McGaughy</i>	•																						
			Jones	Legal Issues for Evaluation Personnel- <i>Holly Wardell</i> (FULL DAY)	•																					

Friday, June 24, 2016

Morning Breakout Sessions Half Day Sessions

8:30-11:30 a.m.

Creative Interventions for Students with Challenging Behaviors

Dr. Laura Riffel

Nolan Room, ESC Main Location

[REPEATS IN SESSION 2](#)

It's easy to assume the cure for inappropriate behavior lies in a little white pill; however, many interventions don't come in a bottle and are quite effective. Using the behavior analysis model, the participant will learn to explore the barriers of learning for each individual child and develop an intervention plan based on the needs of that particular student. Participants will learn how to utilize numerous ways to address students with challenging behaviors from this dynamic presenter.

Connecting Learning Through Engaging Centers

Jeff Samuelson & Tosh McGaughy

Shackelford Room, ESC Main Location

[REPEATS IN SESSION 2](#)

Join Jeff and Tosh from Birdville ISD and learn how to create engaging workstations that utilize a variety of digital resources. Students connect with their learning and communicate and collaborate with peers.

Engaging Resources for Inclusive Classrooms

Pam Loper

Taylor Room, ESC Main Location

In this session, participants will engage in a variety of cooperative learning structures to explore resources available to classroom teachers that provide guidance in working with and providing support to struggling learners.

Differentiating in PPCD

Trudy Little

Eastland Room, ESC Main Location

We all know the PK Guidelines, but not all PPCD students are ready or able to reach those goals. Come get a great resource for meeting the instructional needs of all early childhood learners- with or without disabilities.



All Session Rooms are subject to change

Friday, June 24, 2016

Afternoon Breakout Sessions Half Day Sessions

1:00-3:30 p.m.

Creative Interventions for Students with Challenging Behaviors

Dr. Laura Riffel

Nolan Room, ESC Main Location

REPEATED SESSION 1

It's easy to assume the cure for inappropriate behavior lies in a little white pill; however, many interventions don't come in a bottle and are quite effective. Using the behavior analysis model, the participant will learn to explore the barriers of learning for each individual child and develop an intervention plan based on the needs of that particular student. Participants will learn how to utilize numerous ways to address students with challenging behaviors from this dynamic presenter.

Pick-A-Path Professional Development

Tamara McGaughey, Lisette Spraggins, Pam Loper, Trudy Little

Taylor Room, ESC Main Location

Following an "unconference" model, participants will be able to "vote with their feet" and choose their professional development sessions. Some opportunities will be preset—linking standards for IEPs to your own web-based program (Success Ed, Esped). Other sessions will be submitted by participants. If you have something to share, this is your time! If you want to listen to what others have going on in their classrooms, this is your type of Professional Development! If you want to pick the brain of an ESC 14 consultant, ask for a session!

Bring your own electronic device to this exciting form of professional development!

Literacy Instruction for Students with Autism

Sasha Long

Eastland Room, ESC Main Location

This session will provide detailed instruction on strategies to teach pre-reading skills, oral reading fluency, sight word recognition, reading comprehension, and word attack skills to children with autism and special needs. Presentation will include ideas for utilizing ABA based strategies while teaching reading, staff training protocol, and methods of organizing reading curriculum and data.

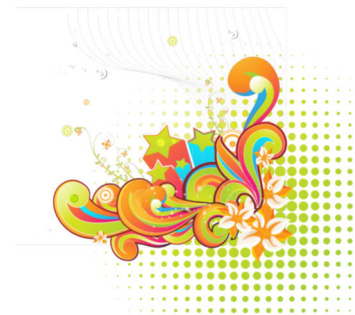
Connecting Learning Through Engaging Centers

Jeff Samuelson & Tosh McGaughy

Shackelford Room, ESC Main Location

REPEATED SESSION 1

Join Jeff and Tosh from Birdville ISD and learn how to create engaging workstations that utilize a variety of digital resources. Students connect with their learning and communicate and collaborate with peers.



Restaurants Near ESC Main Location

1. ABI-HAUS

959 N. 2nd St.
Abilene, TX 79601
325-672-7452
<http://www.good-haus.com>

2. Arby's

1116 E.N. 10th
Abilene, TX
325-676-5550
<http://www.arbysabilenetx.com/contact.html>

3. Betty Rose's Little Brisket

1055 N. Judge Ely
Abilene, TX
325-672-3500
<http://www.bettyroses.com>

4. Chick-fil-A

1750 Hwy. 351
Abilene, TX 79601
325-672-8844
<http://www.chick-fil-a.com/#home>

5. Chili's Grill & Bar

1702 Hwy. 351
Abilene, TX
325-672-1424
<http://www.chilis.com/menu/default.asp>

6. Cracker Barrel

1602 Hwy. 351
Abilene, TX
325-672-0280
<http://www.crackerbarrel.com>

7. Dairy Queen

1626 Hwy. 351
Abilene, TX
325-677-0406
<http://www.dairyqueen.com/us-en/>

8. Jason's Deli

1772 Hwy. 351
Abilene, TX 79601
325-672-4232
<http://www.jasonsdeli.com>

9. Los Arcos

1902 Ambler
Abilene, TX
325-670-9801

10. Lytle Land & Cattle Company

1150 E. S. 11th
Abilene, TX
325-677-1925
<http://www.lytlelandandcattle.com/>

11. McDonald's

1201 N. Judge Ely
Abilene, TX
325-672-1271
<http://www.mcdonalds.com/usa.html>

12. Oscar's Mexican Food

1665 State Hwy 351
Abilene, TX 79601
325-675-0140

13. Panda Express

1749 Hwy. 351
Abilene, TX 79601
325-672-7416
<http://www.pandaexpress.com/>

14. Rosa's Cafe #20

1026 N. Judge Ely Blvd.
Abilene, TX
325-675-6520
<http://www.rosascafe.com/home>

15. Towne Crier

818 E. Bus. 20
Abilene, TX
325-673-4551
<http://www.townecriersteakhouse.com>

16. Wholly Cow Burgers, Rings & Things

829 N. Judge Ely Blvd.
Abilene, TX 79601
325-701-7841
<http://www.whollycownow.com>
info@whollycownow.com

17. Subway

1649 State Highway 351
Abilene TX 79601
325-676-2466

18. McAlister's Deli

849 N Judge Ely Blvd,
Abilene, TX

19. Chicken Express

1034 NE 10th St
ABILENE, Texas 79601
(325) 675-5701

20. Golden Chick

1989 Texas 351
Abilene, TX
(325) 676-2442

21. Heff's Burgers

2642 E Lake Rd
325-437-3006

Welcome to

